



National Institutes of Health

*Pain Awareness Month Special Edition:*

# 2016 Office of Pain Policy Newsletter

## Pain Awareness Month Activities



National Center for Complementary and Integrative Health

### Pain and Complementary Health Approaches Twitter Chat

Thursday, September 1<sup>st</sup>, 1:00 pm ET

Hosted by @NIH\_NCCIH and joined by @NIHPainResearch & many others!

Join Us! and #TalkPain

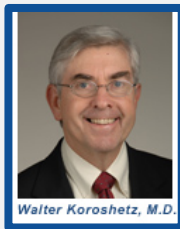


Check the [NIH Pain Consortium Website](#) throughout the month of September for featured activities and resources



Daily Tweets from [@NIHPainResearch](#) (Over 6,000 followers!)

### Infographic on Pediatric Pain...Tell me where it hurts



Walter Koroshetz, M.D.

### NINDS Director's Message on Pain Awareness Month

### Spotlight on Pain Researcher Dr. Allan Basbaum

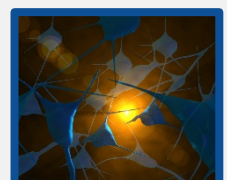
University of California, San Francisco



Dreamstime.com | ©SeeingImages

### Test your Knowledge with our Sickle Cell Disease Quiz

Updates on [NIH Pain Consortium](#) & [IPRC](#) activities



NIH Office of Pain Policy